



## Chapter Review

# Plants

### Part A. Vocabulary Review

**Directions:** Complete the following sentences using the terms listed below.

**cellulose**

**cuticle**

**rhizoids**

**nonvascular plants**

**vascular plants**

**pioneer species**

- The first plants to grow in new environments are called \_\_\_\_\_.
- Cell walls are made of \_\_\_\_\_.
- Moss plants are held in place by rootlike filaments called \_\_\_\_\_.
- \_\_\_\_\_ are plants that have vessels.
- The waxy, protective layer on stems and leaves of plants is the \_\_\_\_\_.
- \_\_\_\_\_ lack a tubelike system of vessels.

**Directions:** Unscramble the terms on the left to form the correct word for each definition on the right.

- |                       |   |
|-----------------------|---|
| _____ 7. tocdi        | flowering plant with two cotyledons in its seed |
| _____ 8. lymex        | tissue of tubular vessels that move water       |
| _____ 9. hemplo       | tissue that moves food from leaves and stems    |
| _____ 10. micmuab     | tissue that produces new xylem and phloem cells |
| _____ 11. amosatt     | small pores in the leaf surface                 |
| _____ 12. rugad slecl | cells that open and close stomata               |

**Directions:** Study the meanings of the word parts listed below. Then write a word containing a word part from the list next to its definition.

**angio**—enclose

**gymno**—naked

**mono**—one

**sperm**—seed

- |  |
|--|
| _____ 13. flowering vascular plants with seeds inside a fruit      |
| _____ 14. nonflowering vascular plants that produce seeds on cones |
| _____ 15. flowering plants with one cotyledon in their seeds       |

**Directions:** Match the plant part with the correct function. Some plant parts will be used more than once.

- |                                      |                |
|--------------------------------------|----------------|
| _____ 16. absorbs water and minerals | <b>a.</b> leaf |
| _____ 17. transports food and water  | <b>b.</b> root |
| _____ 18. stores food for the plant  | <b>c.</b> stem |
| _____ 19. makes food for the plant   |                |
| _____ 20. supports the plant         |                |

## Chapter Review (continued)

### Part B. Concept Review

**Directions:** List four characteristics of plants.

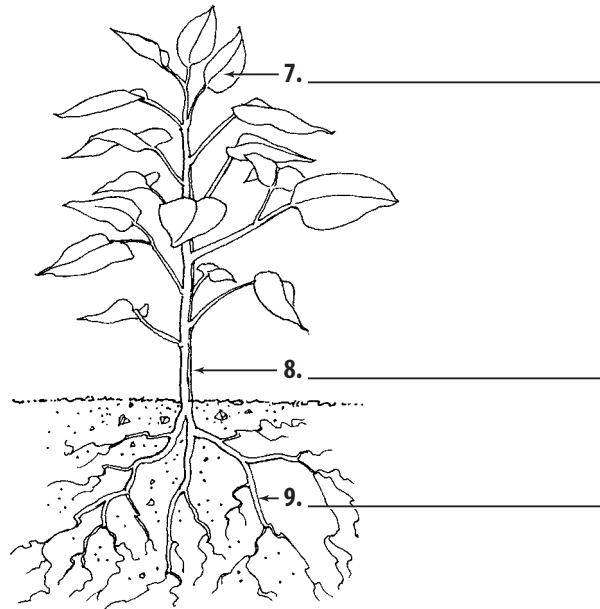
1. \_\_\_\_\_
2. \_\_\_\_\_
3. \_\_\_\_\_
4. \_\_\_\_\_

**Directions:** Describe two structural adaptations of plants that enabled them to live on land.

5. \_\_\_\_\_
6. \_\_\_\_\_

**Directions:** Identify each plant part and write what it does on the lines provided.

7. \_\_\_\_\_  
\_\_\_\_\_
8. \_\_\_\_\_  
\_\_\_\_\_  
\_\_\_\_\_
9. \_\_\_\_\_  
\_\_\_\_\_  
\_\_\_\_\_



**Directions:** Answer the following question using complete sentences.

10. Explain three ways in which nonvascular and vascular spore-producing plants are important.

\_\_\_\_\_

\_\_\_\_\_

\_\_\_\_\_

\_\_\_\_\_

\_\_\_\_\_

\_\_\_\_\_