

SECTION
1

Reinforcement

What is an animal?

Directions: Each statement is an example of a characteristic shared by most or all animals. Write the characteristic on the line provided.

1. Sponges filter microscopic organisms from the water for food.

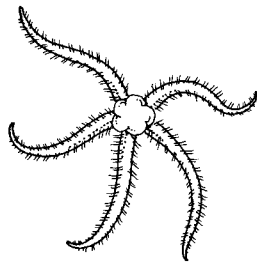
2. Enzymes are secreted in an earthworm's digestive tract.

3. Gorillas travel many miles in search of food.

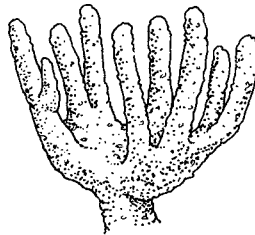
4. The soft body of a mollusk has many different types of tissue.

5. Each cell of a jellyfish has a nucleus surrounded by a membrane.

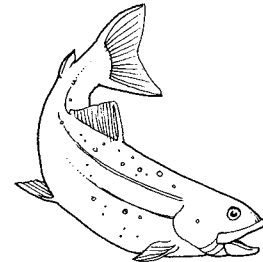
Directions: Describe each animal shown below by using one of the following terms: **radial symmetry**, **bilateral symmetry**, or **no symmetry**.



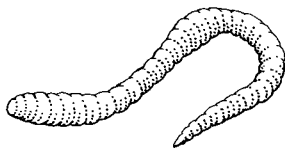
6. _____



7. _____



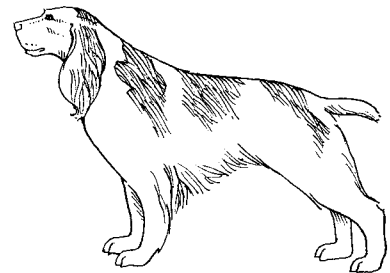
8. _____



9. _____



10. _____



11. _____